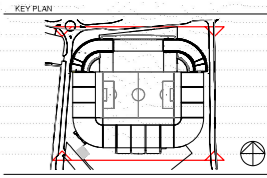


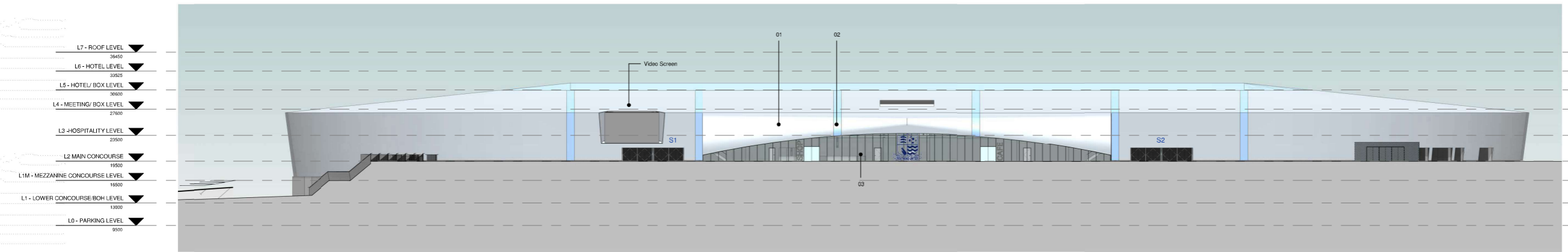
| REVISIONS | |
|-----------|-------------|
| REV | DESCRIPTION |
| | |
| | |
| | |
| | |
| | |
| | |
| | |
| | |
| | |



- 01. Grey standing seam aluminium cladding to facade and roof.
- 02. Blue polycarbonate cladding.
- 03. Black framed curtain walling.



1. NORTH ELEVATION - PHASE 02
1 : 250



2. SOUTH ELEVATION - PHASE 02
1 : 250



© COPYRIGHT, ALL RIGHTS RESERVED
THIS DRAWING IS THE PROPERTY OF POPULOUS AND SHOULD NOT BE REPRODUCED OR TRANSMITTED IN ANY FORM OR BY ANY MEANS, ELECTRONIC OR MECHANICAL, INCLUDING PHOTOCOPYING, RECORDING, OR BY ANY INFORMATION STORAGE AND RETRIEVAL SYSTEM, WITHOUT THE WRITTEN PERMISSION OF POPULOUS AND ITS CLIENTS. ANY REPRODUCTION OR TRANSMISSION OF THIS DRAWING WITHOUT THE WRITTEN PERMISSION OF POPULOUS AND ITS CLIENTS IS STRICTLY PROHIBITED AND WILL BE PROSECUTED TO THE FULL EXTENT OF THE LAW.

ARCHITECT
POPULOUS
14 BLADES COURT | DEodar ROAD | LONDON | SW15 2NU | UNITED KINGDOM
TELEPHONE: +44 (0)20 8874 7886 | FACSIMILE: +44 (0)20 8874 7470
E-MAIL: info@populous.com | www.populous.com

PROJECT NAME
SOUTHEND UNITED FC

DRAWING TITLE
**NORTH & SOUTH ELEVATIONS
PHASE 02**

| | | | | | | | |
|---------------------|-----------------------|----------|-------|------|------|---------|-----|
| STATUS | PROJECT NO. | | | | | | |
| FOR PLANNING | 3093 | | | | | | |
| DATE | SCALE | | | | | | |
| 24.03.2017 | As indicatedA0 | | | | | | |
| DRAWN | CHECKED | APPROVED | | | | | |
| OC | CC | MT | | | | | |
| PROJECT | ORIGIN | ZONE | LEVEL | TYPE | ROLE | DRAWING | REV |
| SUS-POP-ZX | ZZ | EE | A | | | 0303 | 00 |